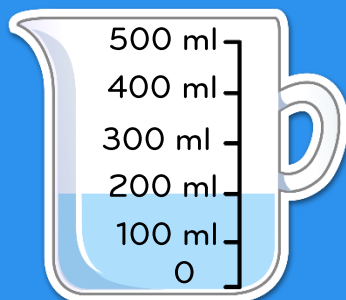




HELLO!

Today we are going to revise measurement
(Converting metric and imperial units)



Arithmetic Warm Up

Division

1. $220 \div 1000 =$

2. $4 \overline{)1608} =$

Revision on measurement

Today we are going to practise



reading measurement scales



estimating and comparing measurements



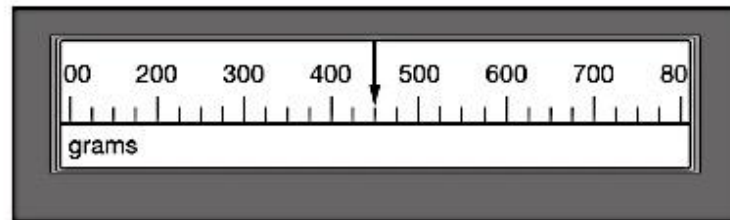


Complete

Question 1

What do you notice?

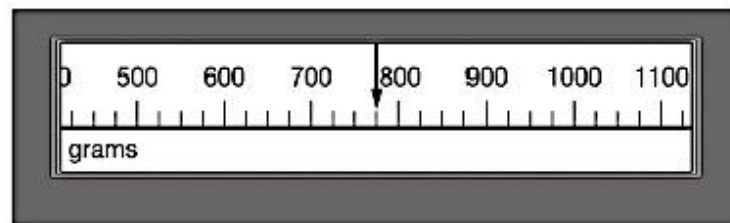
This scale shows the mass of Amy's kitten when it was one month old.



What do you know?

Can you show your working out?

This scale shows the mass of the kitten when it was two months old.



How could you extend the question?

What is the increase in mass?



g



Complete

Question 2

What do you notice?

Sarah is cooking.

Tick (✓) the most likely capacity of the pan.


☐

2.5 millilitres

☐

25 millilitres

☐

250 millilitres

☐

2.5 litres

☐

25 litres

☐

250 litres

What do you know?

Can you show your working out?

How could you extend the question?



Revision on measurement

Today we are going to revise how to:

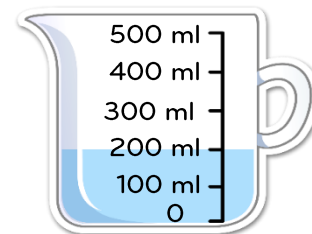


convert between standard metric units of measurement



convert between imperial units and metric units

Revision: Converting metric units



1. 1m = cm

4. 1kg = g

2. 1 cm = 10

5. 1 000 = 1 litre

3. 1km = m

6. 1 tonne = kg



Revision: Converting metric units

Now using your metric units facts, solve these conversions:

1. $2\text{km} =$ m

2. $0.4\text{kg} =$ g

3. $2030\text{ml} =$ litres

4. $5.6\text{m} =$ cm



Complete

Question 3

What do you notice?

Write these lengths in order, starting with the shortest.

What do you know?

$\frac{1}{2}$ m

3.5cm

25mm

20cm

Can you show your working out?

How could you extend the question?



shortest



Question 4



What do you
notice?



What do you
know?



Can you
show your
working out?

How could
you extend
the question?

Cheddar cheese costs £7.50 for 1kg.

Marie buys 200 grams of cheddar cheese.

How much does she pay?



£



Question 5



What do you
notice?



Beth fills six 125ml cups from a full 2 litre bottle of orange juice.

How much orange juice is left in the bottle?

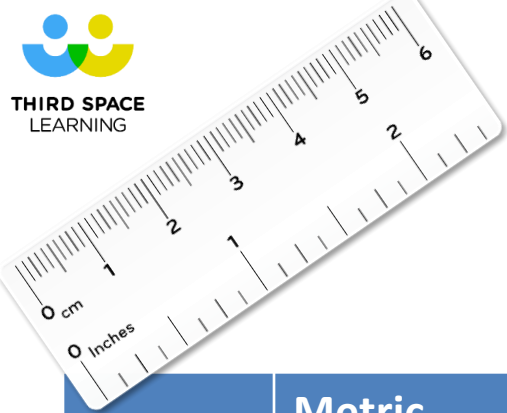
<div>ml</div>

What do you
know?



Can you
show your
working out?

How could
you extend
the question?



Imperial Units

	Metric	Imperial
Length	mm, cm, m, km	inch, foot, yard, mile
	1cm \approx 0.4 inch 1 inch \approx 2.5 cm	1m \approx 3 $\frac{1}{4}$ feet 1 foot (12 inches) \approx 30 cm
Mass	g, kg, tonne	Ounce (oz), pound (lb), stone
	1 kg \approx 2.2 pounds 1 pound \approx 450g	
Capacity	ml, l	pint, gallon
	4 $\frac{1}{2}$ litre \approx 1 gallon 1 litre \approx 1.75 pints 1 pint \approx 570ml	



To build a bookcase you need to buy a piece of wood 24 inches long. When you go to the shops, they only sell wood using metric measures. What length of wood should you ask for?



Question 6

THIRD SPACE
LEARNING



Complete




What do you
notice?

This carton of milk
contains 2.5 litres.




How many pints of milk does the carton contain?

What do you
know? 



Can you
show your
working out?

How could
you extend
the question? 



Question 7

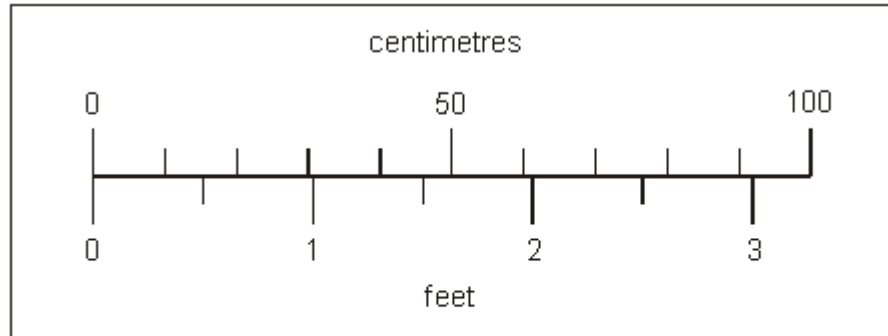
THIRD SPACE
LEARNING



Complete



What do you
notice?



Not actual size

What do you
know?

This scale shows length measurements in centimetres and feet.

Estimate the number of centimetres that are equal to $2 \frac{1}{2}$ feet.



Can you
show your
working out?

How could
you extend
the question?

Let's review:



I can convert between standard metric units of measurement



I can convert between standard metric units and imperial units

Is there something you would like to go over before we move on?



Draw a circle around the smiley face to show how you feel about what we've just been doing.