

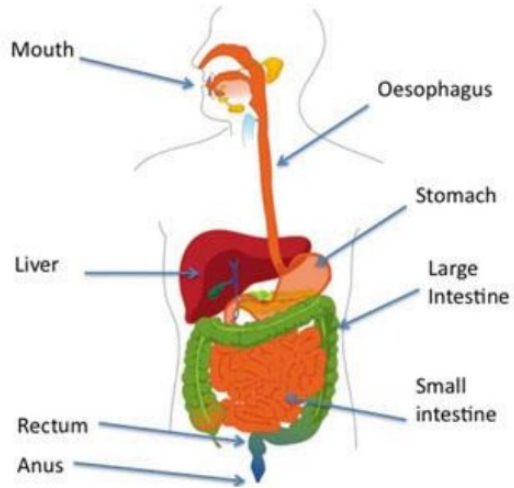


Science

Y4 Summer 2:

Digestive System

Key Facts



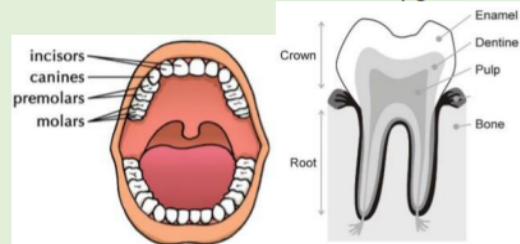
What is the role of our teeth? for cutting and chewing food. They start the digestive process.

What are the different names and functions of our teeth?

Canines are pointed for tearing and ripping food - these are usually used when chewing meat.

- **Incisors** are shovel shaped and help bite lumps out of and cut food.

- **Premolars and molars** are flat and they grind and crush food.



How do we look after them? by brushing and flossing and ensuring that they do not eat foods high in sugar. Not looking after teeth can lead to an in-crease in plaque and tooth **decay**.

Key Questions

What do we know about food?

How is food digested?

How is food broken down?

What are the types of teeth and their function?

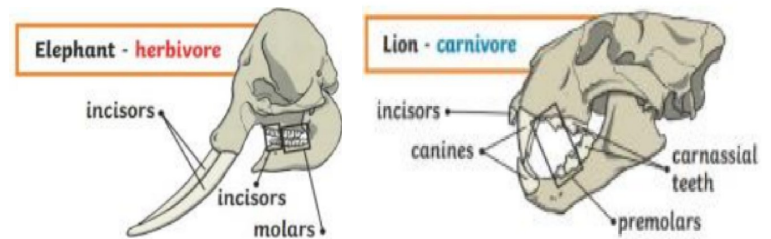
How can we look after our teeth?

What do animals eat?

How is an animal's teeth related to its diet?

How can we model the digestive system?

digestive system	- The group of organs responsible for getting food into and out of the human body.
digestion	- Digestion is the process when the body breaks down food and absorbs the nutrients it needs.
oesophagus	- A stretchy tube that moves food from the back of the throat to the stomach.
incisor	- A narrow-edged tooth at the front of the mouth, used for cutting food. In humans there are four incisors in each jaw.
molars	- The teeth at the back of the mouth that are used for chewing and grinding our food.
premolars	- A tooth between the canine and the molar teeth. An adult human normally has eight: two in each jaw on each side. Used for grinding food.
canine	- The teeth used for ripping and tearing our food. We have two located at the top of our mouth and two at the bottom.
saliva	- Watery liquid in the mouth, gives lubrication for chewing and swallowing and helping digestion.
small intestine	- The organ between your stomach and large intestine. The small intestine breaks down food and absorbs the nutrients you need.
large intestine	- The organ which absorbs water into the body and where waste is stored as faeces.
stomach	- Organ between the oesophagus and the small intestine. The stomach uses acid to help digest food.



Common Misconceptions:

We sometimes use the word **stomach** to mean the tummy or abdomen, and not the **organ** inside. Because we talk about food 'going down the wrong way', some people may think that there are two tubes (correct) but may assume that the second tube is for drinks (not the air we breathe). People often have little concept of how long the digestive tract (system) is (9m for adults).